

Hover

Leaning wall

Design: Karl Kukkk



More than just a wall decoration



Welcome Zone



Social Zone

Enables to have quick conversations

Helps make waiting more comfortable

Saves space, adding cosiness to the milieu

Lean in and make waiting better. Sometimes, there's not enough space for a comfortable sofa, but you still want to make waiting comfortable. The day is saved by the soft leaning wall Hover, which you can lean on to pass the time alone or chatting with a companion.

Hover is brilliantly space-saving and fits perfectly in places where you might need to stand, such as at the airport, in a corridor, or behind a meeting room door. Placed in the office kitchen or in

an in-between space, it provides a convenient spot for exchanging ideas with a colleague on the go. Hover is available as a module in four different sizes. By adding a coffee table and a power socket, you can even get work done while leaning. Quickly installable and featuring easily replaceable fabric, Hover also offers noise-dampening properties thanks to its foam and perforated inner panel. Hover is designed for disassembly fully embracing the principles of circular design.

PRODUCT INFORMATION

Versions

Available in 4 different modules

Accessories

Tables to add functionality to the seating area

Plug-in option

Integrated electrical outlet

Warranty

5 years

Sustainability

Embraces the principles of circular design

Test & Certification

Acoustic absorption test - Class B

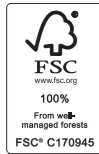
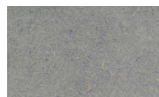
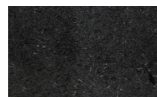


TABLE FINISHING OPTIONS

Valchromat MDF



Light grey



Black grey

Other finishing options available on request.

ELECTRICAL OUTLET



220

Berker Integro Flow

- Color: Anthracite Matt
- 220V socket

Available options DK, EU, FR, UK

Other finishing options available on request.

MATERIALS

Mounting

Metal profiles, button-fix

Frame

Solid wood slats, perforated MDF-plate

Upholstery

Durable and fire resistant HR-foam

Accessories

Tables: Valchromat MDF top

Additional information

The cover fabric is removable

Fabric upholstery

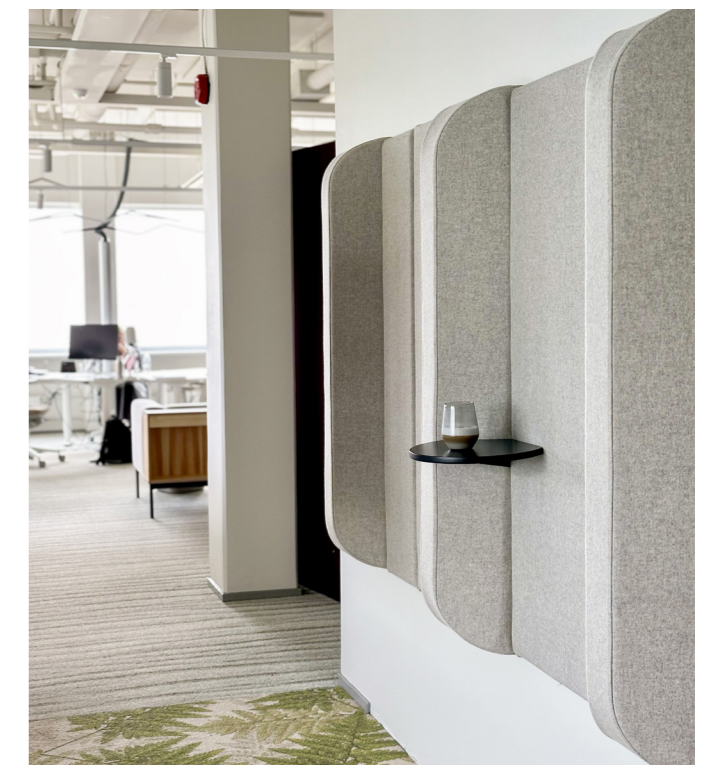
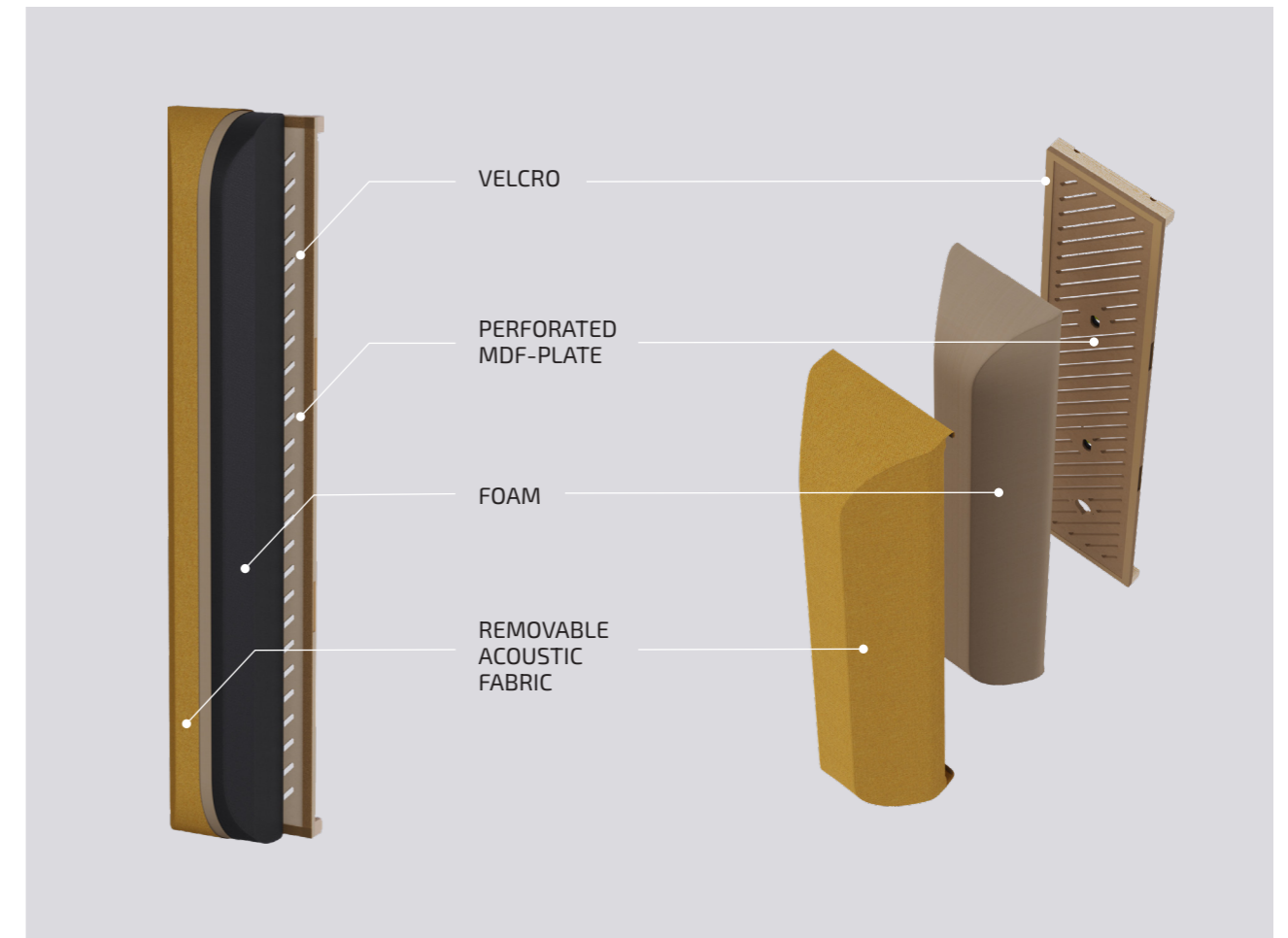
Choose any fabric from Intuit Standard Fabric Collection

For extra acoustic attenuation acoustic fabrics recommended

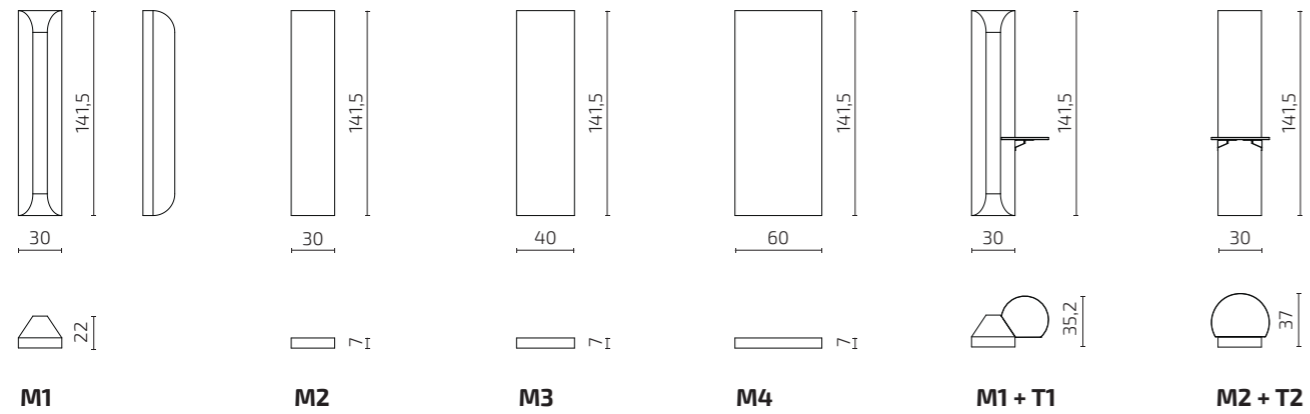


CIRCULAR DESIGN

Designed for disassembly fully embracing the principles of circular design.



DIMENSIONS



PRICE LIST

PRODUCT NAME	CODE	FABRIC CONS.	COM	FABRIC CAT 1	FABRIC CAT 2	FABRIC CAT 3	FABRIC CAT 4	FABRIC CAT 5	FABRIC CAT 6
HOVER module M1	S130-M1	1,8	336	353	408	469	549	630	705
HOVER module M1L	S130-M1L	1,8	343	359	415	475	556	636	712
HOVER module M1R	S130-M1R	1,8	343	359	415	475	556	636	712
HOVER module M2	S130-M2	1,7	234	249	302	359	435	511	583
HOVER module M2-E220V (S114-EL8)	S130-M2E220	1,7	553	568	621	678	754	830	902
HOVER module M2-EUSB-A+USB-C (S114-EL9)	S130-M2EUSB	1,7	744	759	811	868	944	1021	1092
HOVER module M3	S130-M3	1,7	240	255	308	365	441	517	589
HOVER module M3-E220V (S114-EL8)	S130-M3E220	1,7	559	574	627	684	760	836	908
HOVER module M3-EUSB-A+USB-C (S114-EL9)	S130-M3EUSB	1,7	750	765	817	874	950	1027	1098
HOVER module M4	S130-M4	1,7	257	272	325	382	458	534	606
HOVER module M4-E220V (S114-EL8)	S130-M4E220	1,7	576	591	644	701	777	853	924
HOVER module M4-EUSB-A+USB-C (S114-EL9)	S130-M4EUSB	1,7	766	782	834	891	967	1043	1115
HOVER table T1L	S130-T1L		56						
HOVER table T1R	S130-T1R		56						
HOVER table T2	S130-T2		90						

Currency: € (VAT excl)

All dimensions provided in centimetres

EXAMPLE COMBINATIONS

